

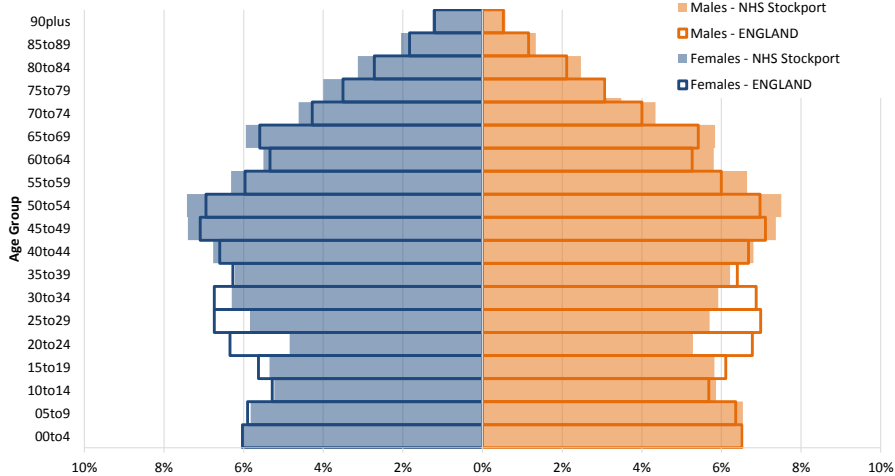
**NHS Stockport Clinical Commissioning Group Dementia Dashboard**

Name	Sum of Dementia Registers (ALL AGES) latest available	DDR EAS1: Sum of Dementia Registers (65 + only) latest available	DDR EAS1: Estimated Dementia Prevalence (65 + only) CFAS II	DDR EAS1: Dementia Diagnosis Rate
ENGLAND	886,755	858,878	1,278,006	134.40%
Greater Manchester	43,702	42,029	54,742	153.56%
NHS Stockport	5,624	5,466	7,492	145.92%
North of England	268,191	259,032	358,750	144.37%

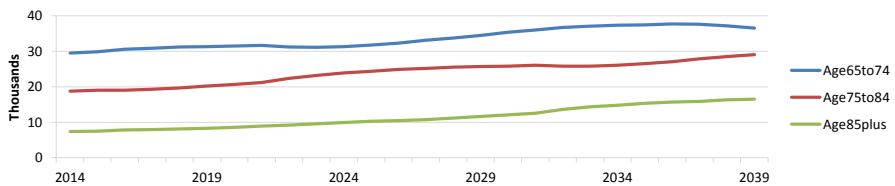
	Prescribing		Admissions
	Actual cost per dementia patient	Total Cost of Drugs for Dementia	Emergency admissions with a dementia diagnosis per 100k registered pop in last 12 mths
<b>NHS Stockport CCG</b>	<b>£69.89</b>	<b>£191,141.27</b>	<b>822.2</b>
Bramhall & Cheadle Hulme	£77.20	£37,520.22	815.7
Cheadle, Gatley & Heald Green	£66.25	£20,999.69	944.6
Hazel Grove & Offerton	£55.22	£13,364.03	802.1
Heatons	£70.35	£23,285.87	656.2
Marple	£79.85	£23,156.12	816.9
Tame Valley	£74.93	£30,198.00	803.5
Victoria	£67.41	£23,323.86	859.4
Werneth	£59.22	£18,949.52	1,023.4

**Population**

**Stockport CCG Mid-2015 population estimate**

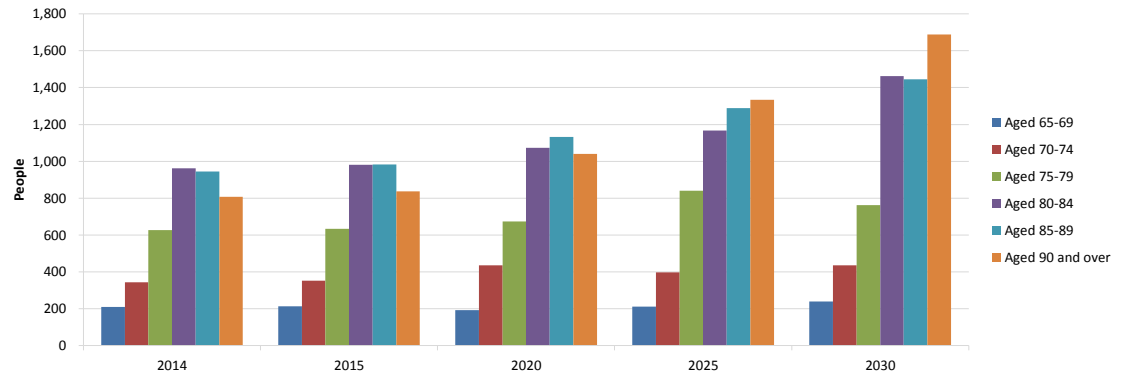


**NHS Stockport CCG 2014-based population projection of people aged 65 years+**



**Projected Prevalence of Dementia**

**People aged 65 and over predicted to have dementia in Stockport projected to 2030**



**Stockport Dementia Friends as at: January 2017**

Champions	50
Digital	1,292
Info Sessions	3,716
Organisations	35

**Greater Manchester Dementia Register:- December 2016**

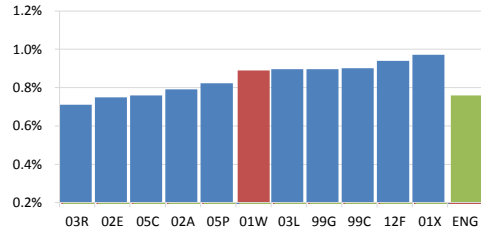
NHS Bolton	2,407
NHS Bury	1,849
NHS Central Manchester	859
NHS Heywood, Middleton & Rochdale	1,531
NHS North Manchester	1,087
NHS Oldham	1,949
NHS Salford	2,084
NHS South Manchester	1,010
<b>NHS Stockport</b>	<b>2,842</b>
NHS Tameside and Glossop	2,096
NHS Trafford	1,984

Prevalence

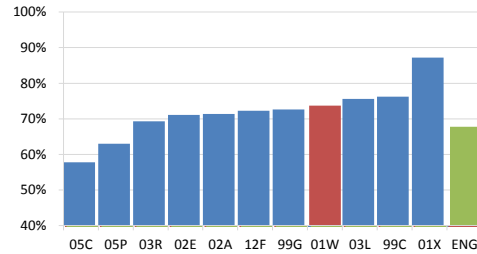
Diagnosis Rate

Quality of Care

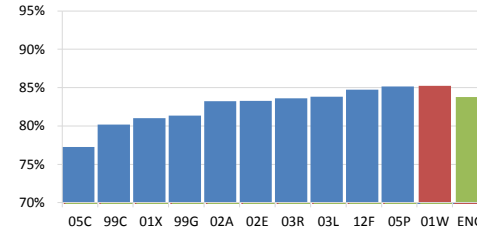
Prevalence - % of Patients on QOF Dementia Register 2015-16  
Stockport CCG Peer Group



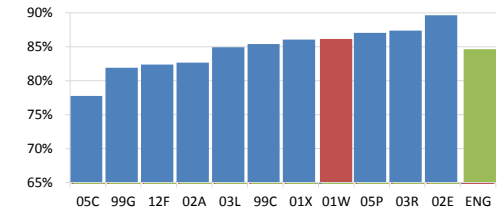
Dementia Diagnosis Rate To 31/12/2016  
Stockport CCG Peer Group



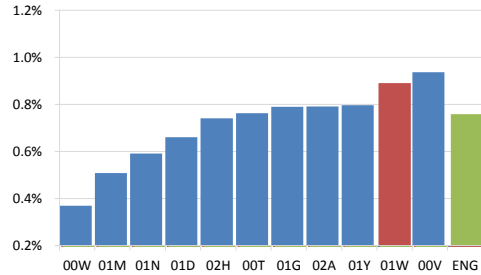
% of Patients on Dementia Register with a review of care in previous 15 months (DEM002) 2015-16  
Stockport CCG Peer Group



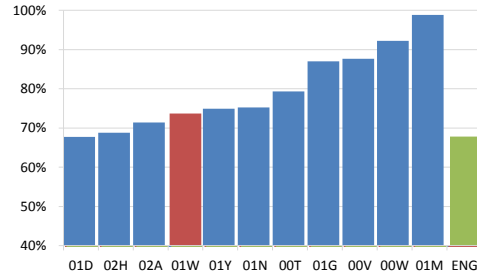
% of Patients on Dementia Register with a new recording of dementia with a record of tests (DEM003) 2015-16  
Stockport CCG Peer Group



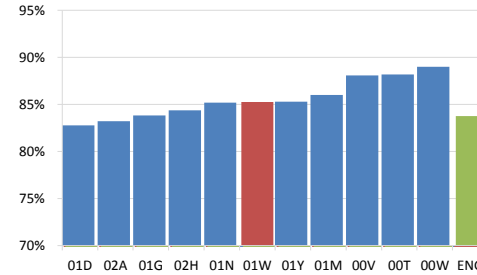
Greater Manchester CCGs



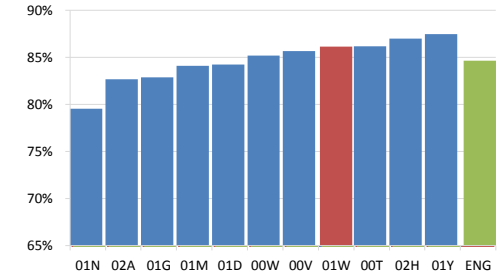
Greater Manchester CCGs



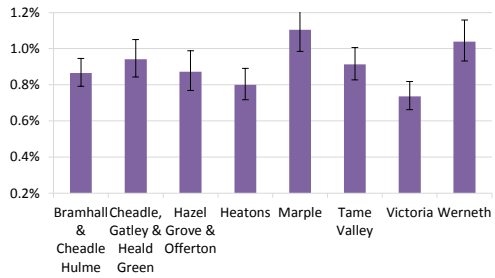
Greater Manchester CCGs



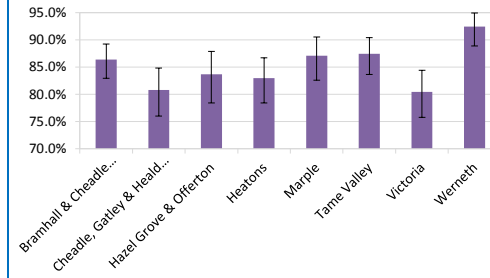
Greater Manchester CCGs



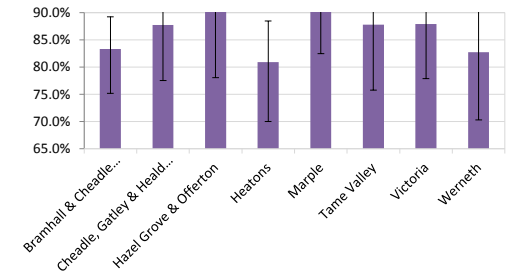
Stockport Neighbourhoods



Stockport Neighbourhoods

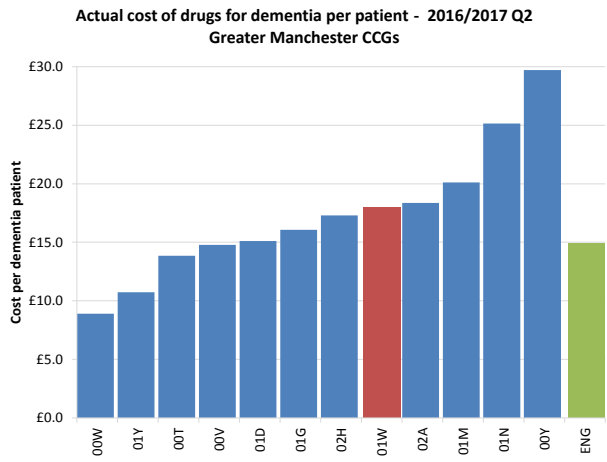
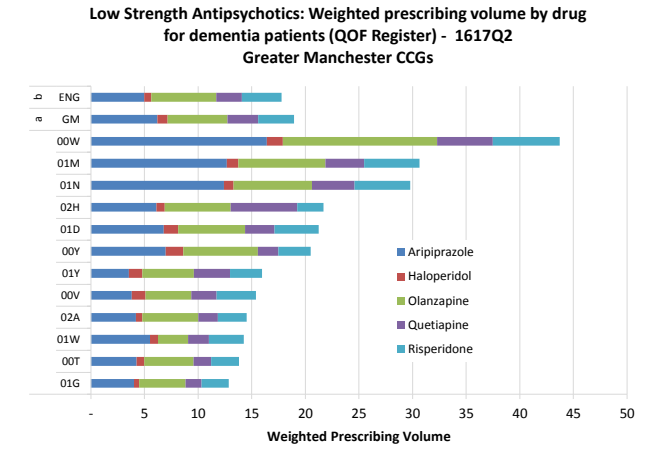
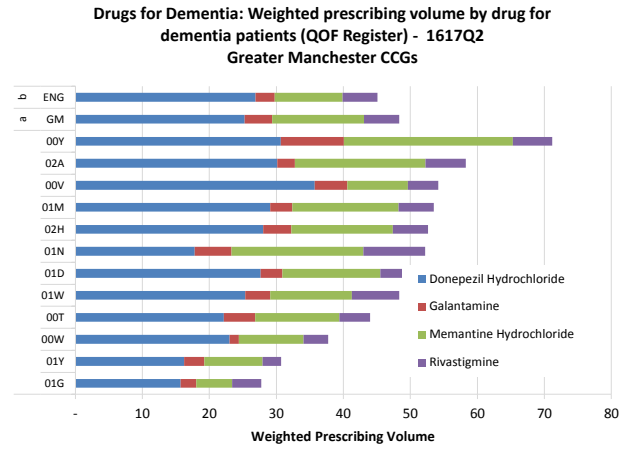
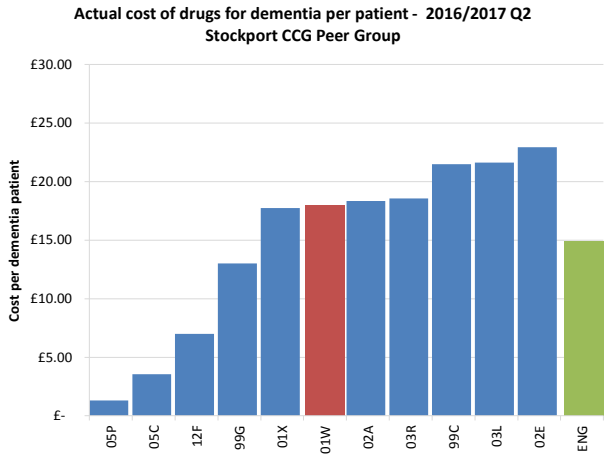


Stockport Neighbourhoods

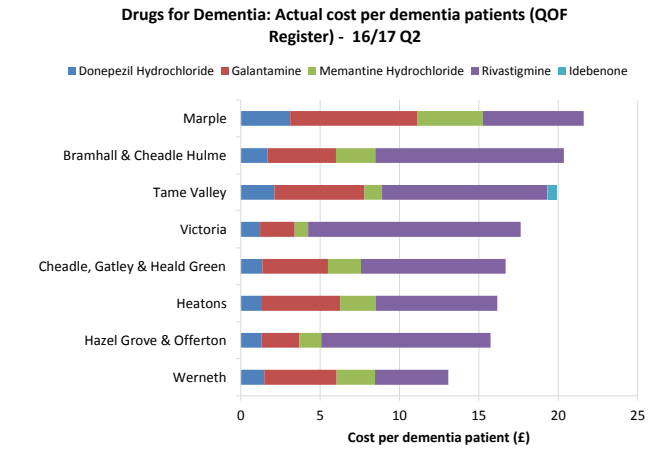
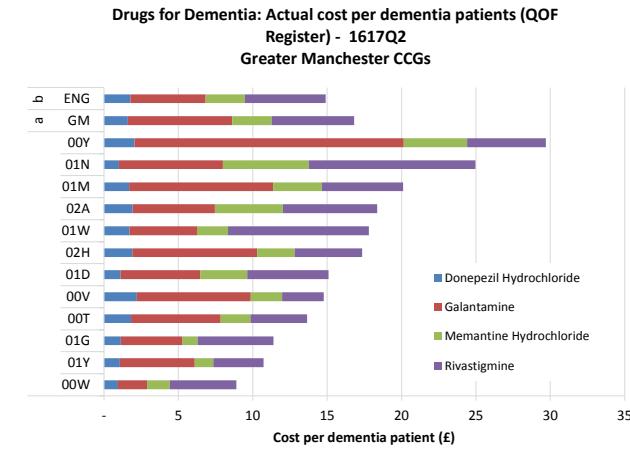


All Dementia Drugs - Cost per dementia patient

Weighted Prescribing volume by drug

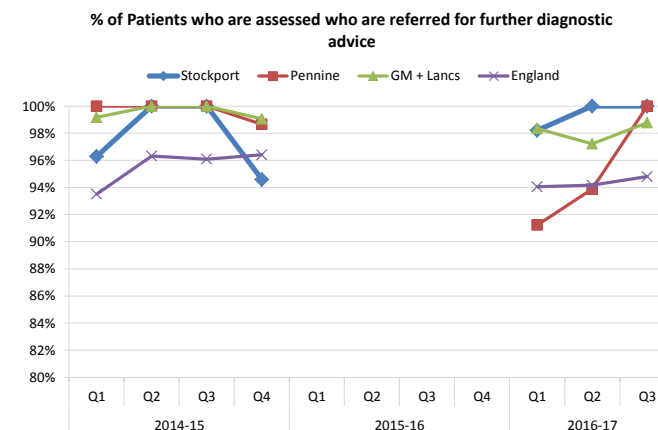
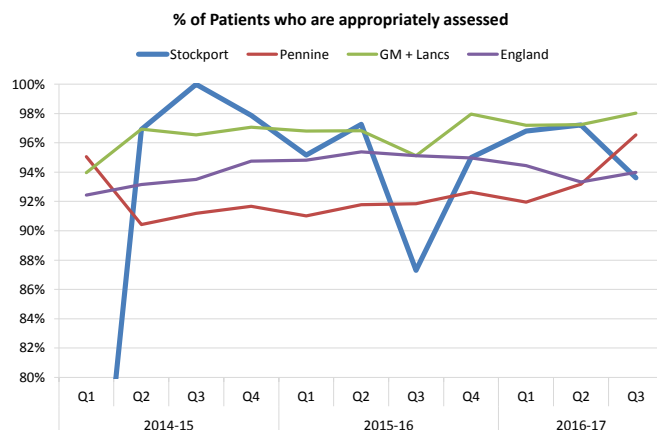
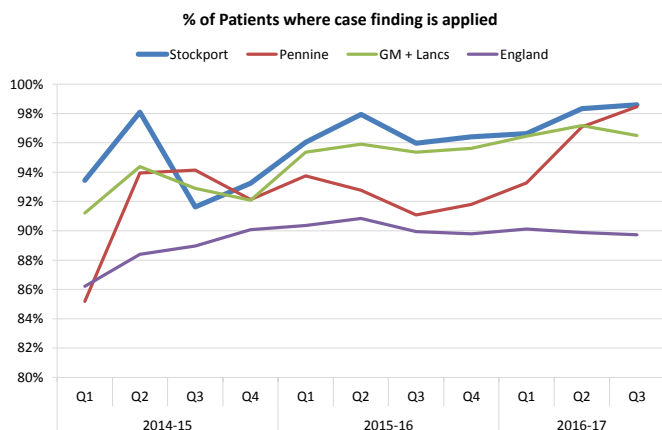


Cost per dementia patient by drug



	2014-15				2015-16				2016-17		
	Q1	Q2	Q3	Q4	Q1	Q2	Q3	Q4	Q1	Q2	Q3
<b>STOCKPORT NHS FOUNDATION TRUST</b>											
% of Patients aged 75 and over to whom case finding is applied	93.4%	98.1%	91.6%	93.2%	96.0%	97.9%	96.0%	96.4%	96.6%	98.3%	98.6%
<i>Numerator</i>	1,380	1,442	1,128	1,117	1,167	1,188	1,360	1,450	1,287	1,249	354
<i>Denominator</i>	1,477	1,470	1,231	1,198	1,215	1,213	1,417	1,504	1,332	1,270	359
% of Patients identified who are appropriately assessed	60.3%	96.9%	100.0%	97.9%	95.2%	97.3%	87.3%	95.0%	96.8%	97.2%	93.6%
<i>Numerator</i>	41	63	33	46	59	71	55	95	91	105	44
<i>Denominator</i>	68	65	33	47	62	73	63	100	94	108	47
% of patients assessed who are referred for further diagnostic advice	96.3%	100.0%	100.0%	94.6%					98.2%	100.0%	100.0%
<b>PENNINE ACUTE HOSPITALS NHS TRUST</b>											
% of Patients aged 75 and over to whom case finding is applied	85.2%	93.9%	94.2%	92.1%	93.8%	92.8%	91.1%	91.8%	93.3%	97.1%	98.5%
% of Patients identified who are appropriately assessed	95.0%	90.4%	91.2%	91.7%	91.0%	91.8%	91.8%	92.6%	91.9%	93.2%	96.6%
% of patients assessed who are referred for further diagnostic advice	100.0%	100.0%	100.0%	98.7%					91.2%	93.9%	100.0%
<b>NHS ENGLAND NORTH (GM + some LANCS)</b>											
% of Patients aged 75 and over to whom case finding is applied	91.2%	94.4%	92.9%	92.1%	95.4%	95.9%	95.4%	95.6%	96.5%	97.2%	96.5%
% of Patients identified who are appropriately assessed	94.0%	96.9%	96.5%	97.1%	96.8%	96.8%	95.1%	98.0%	97.2%	97.2%	98.0%
% of patients assessed who are referred for further diagnostic advice	99.2%	100.0%	100.0%	99.1%					98.4%	97.2%	98.8%
<b>England</b>											
% of Patients aged 75 and over to whom case finding is applied	86.2%	88.4%	89.0%	90.1%	90.4%	90.8%	90.0%	89.8%	90.1%	89.9%	89.7%
% of Patients identified who are appropriately assessed	92.4%	93.2%	93.5%	94.8%	94.8%	95.4%	95.1%	95.0%	94.4%	93.3%	94.0%
% of patients assessed who are referred for further diagnostic advice	93.5%	96.3%	96.1%	96.4%					94.0%	94.2%	94.8%

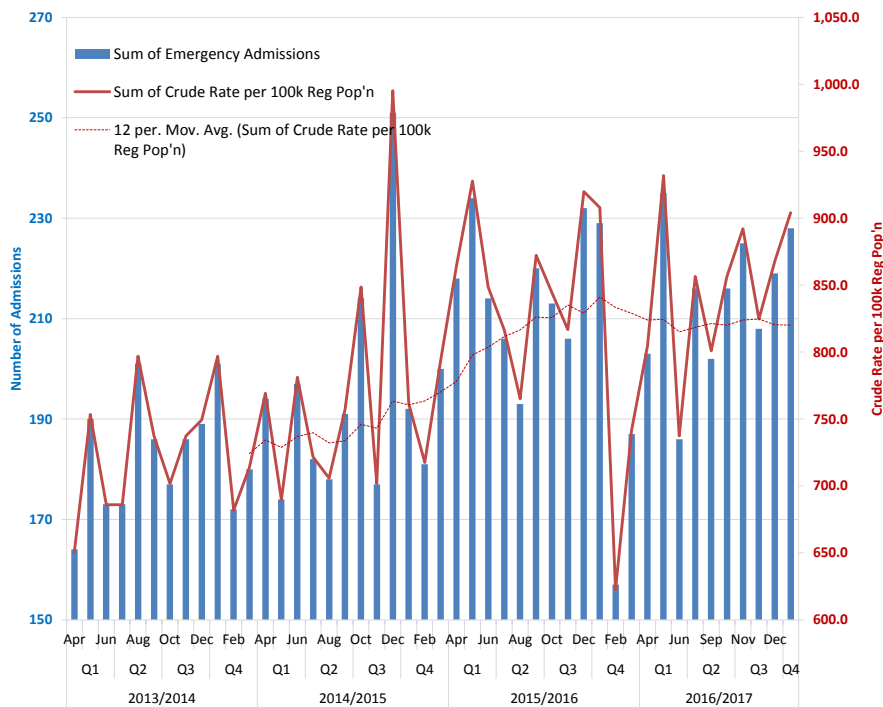
Note- Due to data quality issues, 2015-16 data was not published on unify.



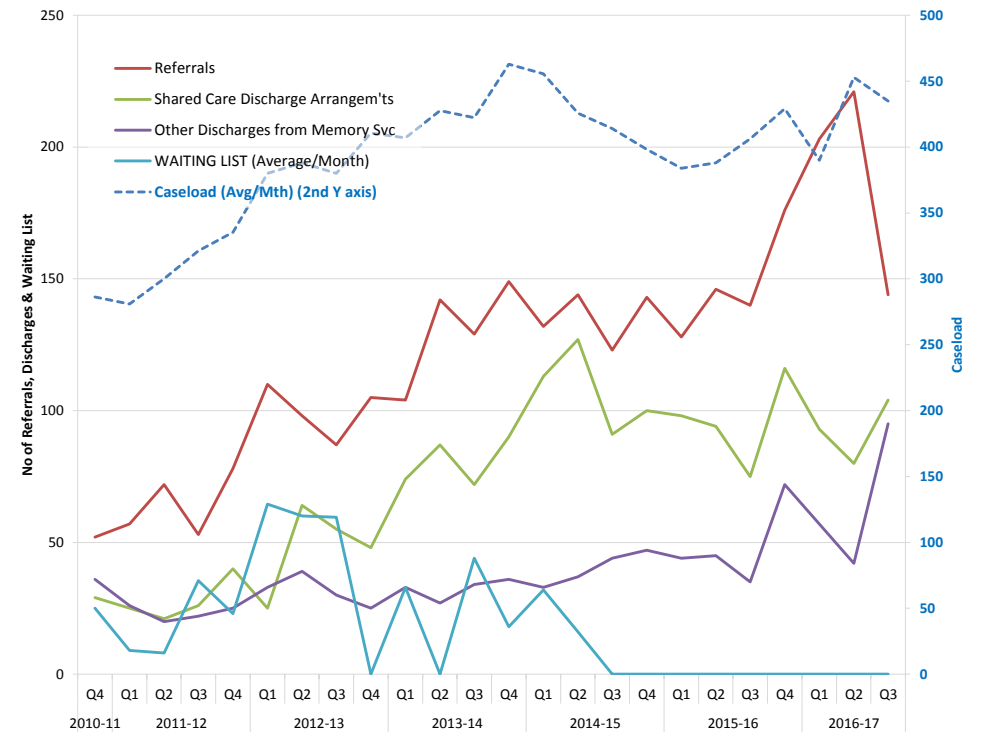
	2013/2014		2014/2015				2014/2015 Total	2015/2016				2015/2016 Total	2016/2017		
	Q1	Q2	Q3	Q4	Q1	Q2		Q3	Q4	Q1	Q2		Q3		
Number of emergency admissions to patients aged 75yrs +	<b>10,826</b>	2,734	2,663	2,828	2,804	<b>11,029</b>	2,876	2,831	2,835	2,702	<b>11,244</b>	2,617	2,776	2,904	
with a length of stay of > 72 hours	<b>6,445</b>	1,638	1,624	1,742	1,745	<b>6,749</b>	1,664	1,655	1,686	1,639	<b>6,644</b>	1,539	1,576	1,590	
with primary diagnosis of dementia	<b>78</b>	27	25	23	20	<b>95</b>	23	23	22	17	<b>85</b>	18	10	18	

	2013/2014 Total	2014/2015				2014/2015 Total	2015/2016				2015/2016 Total	2016/2017		
		Q1	Q2	Q3	Q4		Q1	Q2	Q3	Q4		Q1	Q2	Q3
Emg admissions & primary or secondary diag of dementia (any age)	<b>2,192</b>	565	551	642	573	<b>2,331</b>	666	619	651	573	<b>2,509</b>	624	634	<b>652</b>
Crude rate per 100,000 population	<b>724.25</b>	746.72	728.22	848.49	757.30	<b>770.18</b>	880.21	818.09	860.38	757.30	<b>828.99</b>	824.70	837.91	<b>861.70</b>
Total cost excluding unbundled items (£ thousands)	<b>5,862</b>	1,526	1,482	1,717	1,666	<b>6,391</b>	1,768	1,671	1,797	1,663	<b>6,900</b>	1,912	2,224	<b>1,928</b>
Number of those admissions with a fall in the diagnoses	<b>419</b>	110	112	134	102	<b>458</b>	142	121	134	121	<b>518</b>	134	102	<b>123</b>
% of those admissions with fall in the diagnoses	<b>19.1%</b>	19.5%	20.3%	20.9%	17.8%	<b>19.6%</b>	21.3%	19.5%	20.6%	21.1%	<b>20.6%</b>	21.5%	16.1%	<b>18.9%</b>

Emergency admissions with primary or secondary diagnosis of dementia by month (NHS Stockport CCG)



Referrals to Memory Clinic - NHS Stockport CCG



**Data sources used:**

NHS England Monthly Dementia Workbook [www.england.nhs.uk/mentalhealth/dementia/monthly-workbook](http://www.england.nhs.uk/mentalhealth/dementia/monthly-workbook)  
 HSCIC GP Registered Population  
 NHS Prescription Services ePACT.net  
 Quality Outcomes Framework 2015-16  
 ONS  
 Projecting Older People Population Information (POPPI) <http://www.poppi.org.uk>  
 Regional Drug & Therapeutics Centre <http://rdtc.nhs.uk/>  
 SUS Standard Extract Mart (SEM)  
 Unify2 Dementia (PUBLIC) extract

**Definitions:**

**Dementia prevalence (adjusted):** Estimated number of people with dementia. 'Adjusted' refers to the adjustment which is made to the expected prevalence figure, recognising there is a higher prevalence of dementia in residential care settings.

**Dementia diagnosis rate:** QOF dementia register / Adjusted dementia prevalence

**Emergency admissions to hospital to patients aged 75+:** Method of admission between 21 and 28 (including 2A, 2B, 2C, 2D); episode start age >= 75 years.

**Emergency admissions to hospital with a primary or secondary diagnosis of dementia:** Method of admission between 21 and 28 (including 2A, 2B, 2C, 2D); Diagnosis of dementia (ICD10 codes F01, F02, F03, G30) anywhere in the spell

**Stockport CCG peer group:** As defined by NHS England for Commissioning for Value tools

**Key to Organisation Codes**

<u>Stockport CCG peer group</u>	
01W	NHS STOCKPORT CCG
01X	NHS ST HELENS CCG
02A	NHS TRAFFORD CCG
02E	NHS WARRINGTON CCG
03L	NHS ROTHERHAM CCG
03R	NHS WAKEFIELD CCG
05C	NHS DUDLEY CCG
05P	NHS SOLIHULL CCG
12F	NHS WIRRAL CCG
99C	NHS NORTH TYNESIDE CCG
99G	NHS SOUTHEND CCG

<u>Greater Manchester CCGs</u>	
00T	NHS Bolton
00V	NHS Bury
00W	NHS Central Manchester
00Y	NHS Oldham
01D	NHS Heywood, Middleton and Rochdale
01G	NHS Salford
01M	NHS North Manchester
01N	NHS South Manchester
01W	NHS Stockport
01Y	NHS Tameside and Glossop
02A	NHS Trafford
02H	NHS Wigan Borough

<u>National and Regional Codes</u>	
ENG	England
GM	Greater Manchester

Dashboard produced by NHS Stockport Clinical Commissioning Group

Nicole Alkemade, Older People's Joint Commissioning Manager

Business Intelligence Team